

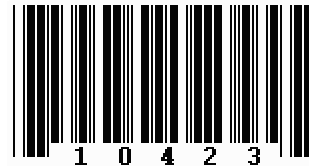
**Mobile Equipment Locator
Asset Tracking Solution**



The Mobile Equipment Locator is an easy and affordable way to track the location of equipment that is moved around from place to place. A bar code is affixed to each piece of equipment that is to be tracked.

Whenever equipment is moved, the personnel that moved the equipment simply scan the bar code with a specially equipped cell phone, and the Mobile Equipment Locator does the rest.

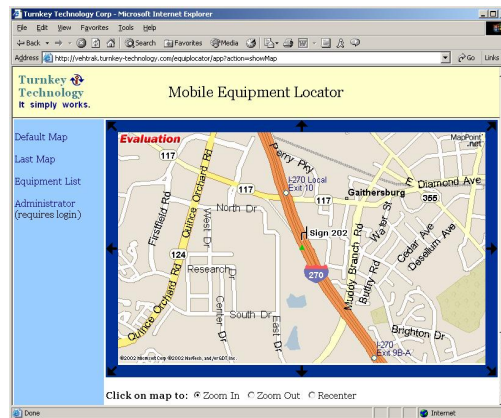
After a bar code is scanned, the Mobile Equipment Locator determines the equipment's location using GPS and sends the location data to the central system.



The central system keeps track of the location of all equipment in the system and allows an inventory of all equipment to be shown, including the city and state of

the equipment's current location. The central system also provides a full-featured map to allow the location of all of your equipment to be seen in great detail.

The Mobile Equipment Locator is made possible with GPS enabled phones provided by Motorola, wireless service provided by Nextel, and a bar code reader made by Symbol. The barcode reader simply snaps onto the phone, replacing the phone's original battery cover. This equipment combination provides a very affordable, feature-rich cell phone that not only allows its owner to use it as a normal cell phone and walkie-talkie, but also allows the Mobile Equipment Locator application to be run when needed to record the movement of equipment.



The Mobile Equipment Locator is extremely easy to use. When equipment has been moved, you need only start the EquipLocator cell phone application, push a button to activate the bar code scanner and direct the red laser over the equipment's bar code.

A beep lets you know the bar code has been scanned, and you then let EquipLocator do its thing....acquiring a GPS fix and sending the data to the central system.

Other systems that exist to track equipment locations require GPS equipment to be fixed to each piece of equipment, which can quickly become very expensive when there are many pieces of equipment to track. With the Mobile Equipment Locator, only the people that move the devices need to be outfitted with GPS, and better yet, the GPS receiver is built into their mobile phone, eliminating the need for separate tracking equipment.

The Mobile Equipment Locator allows new equipment to be easily added to the system. After scanning a piece of equipment, if it doesn't already exist in the system, you can use the cell phone's keypad to enter a description of the equipment and add it to the system. This feature allows the Mobile Equipment Locator to be used to inventory fixed field equipment or even to be used for recovery operations.

A standard server and web based user interface can be customized to meet your specific needs, such as custom icons for various equipment types, custom fields for the inventory data, and custom sorting and reports.

Mobile Equipment Locator Sample Uses

Departments of Transportation

Portable Message Signs
Arrow Boards
Light Plants
Roadway Equipment Inventory

Construction

Heavy Equipment
Trailers

Rental Companies

Tents
Portable Amusements
Heavy Equipment

Law Enforcement

Towed/Recovered Vehicles
Recovered Property/Evidence